



cAMP caproKit™ 50 Reactions

List of components

cAMP Capture Compound™

The cAMP caproKit™ allows a selective isolation of cAMP-binding proteins and protein-protein interacting partners. The synthetic Capture Compound™ (Figure 1) uses cyclic adenosyl-monophosphate as selectivity function to interrogate native proteins. The technology enables analysis, discovery and characterization of cAMP-binding proteins through an efficient complexity reduction of the proteome.

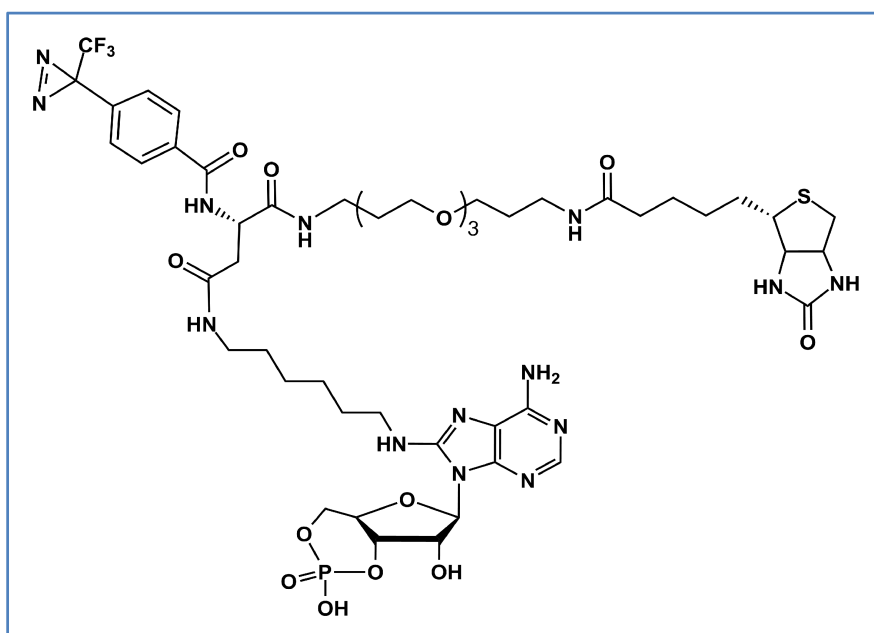


Figure 1 cAMP Capture Compound for selective isolation of cAMP binding proteins using cAMP as selectivity function.

Component	Amount	Composition	Storage
Capture buffer (5x CB)	1.1 ml	HEPES, KOAc, Mg(OAc) ₂ , Glycerol, Triton X-100, pH 7.5	4 to 8 °C
Wash buffer 1 (5x WB1)	25 ml	Tris*HCl, EDTA, NaCl, Octyl-β-D-glucopyranoside, pH 7.9	4 to 8 °C
Streptavidin coated magnetic beads (10 mg/ml SA-MB)	2.8 ml	Dynal Dynabeads MyOne™ Streptavidin C1 (Invitrogen)	4 to 8 °C
Cyclic adenosyl-monophosphate (4 mM cAMP competitor)	1.5 ml	HEPES, NaOH, pH 7.5	4 to 8 °C
PKA RI (16 μM)	5 μl	NaCl, K ₂ HPO ₄ , EDTA, Glycerol, β-mercaptoethanol, pH 6.8	- 20 to -18 °C
cAMP Capture Compound (100 μM cAMP-CC)	1.4 ml	Water	- 20 to -18 °C

Note: The PKA RI solution will not freeze due to the glycerol in the storage buffer, whereas the Capture Compound solution and cAMP solution freeze and need to be completely thawed before usage. cAMP solution can be warmed up (40 °C) to thaw completely. It is recommended to aliquot the Capture Compound solution upon arrival to avoid multiple freezing/thawing cycles of the stock solution.

Separate 1.5 ml 5x WB1 in a fresh 2.0 ml tube for the assay. Dilute the rest of the 5x WB1 in a ratio of 1:5 in aqua bidest for washing steps and store at 4 to 8 °C.

Please read the material safety data sheet for this product at www.caprotec.com

Contact and order information:

caprotec bioanalytics GmbH

Volmerstrasse 5
D-12489 Berlin

Phone: +49 30 63 92 39 90

Fax: +49 30 63 92 39 89

Web: www.caprotec.com

Email: sales@caprotec.com

Ordering information: caprotec part number: 1-1030-050

Copyright

© 2008 caprotec bioanalytics GmbH. All rights reserved. Reproduction in whole or in part only with permission of caprotec bioanalytics GmbH.

Trademarks

caproKits, caproBox, caprotec, caproBeads and Capture Compound are trademarks of caprotec bioanalytics GmbH. All other used tradenames or trademarks belong to their respective owners.

Rev. 1.0 06/09

Products & Services

CCMS technology is made available as ready to use caproKit reagents and services.

For more information please visit www.caprotec.com

Or contact us. Email: info@caprotec.com

Phone: +49 30 6392 4004

Products and Services are for Research use only.

© 2008 caprotec bioanalytics GmbH